

  
*Maserati*



*Levante*



**An enduring legacy | 6**

History of character

**Endless possibilities | 8**

Discover the Levante Collection

**A distinctive invitation | 22**

Experience something truly unique in a world of standardized choices

**High-powered Luxury | 28**

Maserati Connect and Safety ADAS

**Fuoriserie | 44**

Your Maserati tailor-made to your unique personality

**Technical specifications | 50**

Specifications overview of all Levante versions

**A world of possibilities | 54**

# The Maserati *of SUVs*



## Force of *Nature*

Maserati has a history of naming its cars after the world's most famous winds. It started in 1963 with the legendary Mistral. Then came the Ghibli, the Bora and the Khamsin. And in 2016 the Levante joined the illustrious Maserati range. The wind that bears its name blows across the Mediterranean and can change from benign calm to gale force in an instant. The Maserati SUV has a similar nature, although its powerful forces always remain under perfect control. In true Maserati grand touring tradition, nothing can disturb your comfort - whatever the speed, whatever the distance, a new journey has begun - with the SUV that accepts no boundaries.



The Levante SUV embodies the enduring, intrepid and endlessly progressive spirit of Maserati - and it is part of a story that dates back over 100 years. The Maserati drive to innovate and passion for speed made the transition into elite motor sport inevitable. Since then, all Maserati production models have followed this unique formula, offering race-bred performance, captivating Italian design and the luxuries and comfort you would expect from a prestigious grand tourer. All this is delivered by the latest Maserati Levante. And the striking SUV design adds yet another compelling dimension to the experience.

Mistral | 1963



An *Enduring* Legacy

V8 Engine - Levante Trofeo



V6 Engine - Levante Modena, Levante Modena S



L4 Engine - Levante GT Hybrid



The engines in the different Levante versions offer everything you would expect of a Maserati – from snarling responsiveness to effortless long-distance refinement. They are also remarkably efficient.

The ultimate combination of leading on-road performance and off-road capabilities offers a choice of V6 and powerful V8 petrol engines, including the new hybrid version.

***Endless* possibilities**

## Three new trims for a *unique encounter*

Three exclusive new trims have been introduced as part of the new 2022 Levante Range. In terms of style, the new **GT, Modena and Trofeo** trims introduced a **new Maserati logo** on the bonnet and a **new specific badge for each trim version** placed just above the three iconic side air vents. At the rear, the traditional saetta logo has been replaced by a new Trident logo on the C-pillar, while a new Maserati script takes stage on the trunk.

### GT

The GT trim elegantly underlines the original Maserati grand touring philosophy and embodies the Brand's more urban and contemporary spirit. The elegant details of this new trim gracefully illustrate what it means to travel in grand style with a Maserati Levante.



### Modena

Inspired by our home city, the land of fast cars. The dynamic purpose of the Levante now becomes even more explicit with the Modena trim.

### Trofeo

Looks don't deceive. The powerful Trofeo-specific design elements constantly remind you that performance is a priority.



The Levante will take you to higher grounds. Find yours.

# The Levante *Collection*

Max power   Max speed   Acceleration   Engine layout   Traction   Max torque

Max power   Max speed   Acceleration   Engine layout   Traction   Max torque

Levante **GT Hybrid**



**330**<sub>HP</sub>

**245**<sub>km/h</sub>

**6.0**<sub>sec</sub>

**L4**

**AWD**

**450**<sub>Nm</sub>

Levante **Modena S**



**430**<sub>HP</sub>

**264**<sub>km/h</sub>

**5.2**<sub>sec</sub>

**V6**

**AWD**

**580**<sub>Nm</sub>

Levante **Modena**



**350**<sub>HP</sub>

**251**<sub>km/h</sub>

**6.0**<sub>sec</sub>

**V6**

**AWD**

**500**<sub>Nm</sub>

Levante **Trofeo**



**580**<sub>HP</sub>

**302**<sub>km/h</sub>

**4.1**<sub>sec</sub>

**V8**

**AWD**

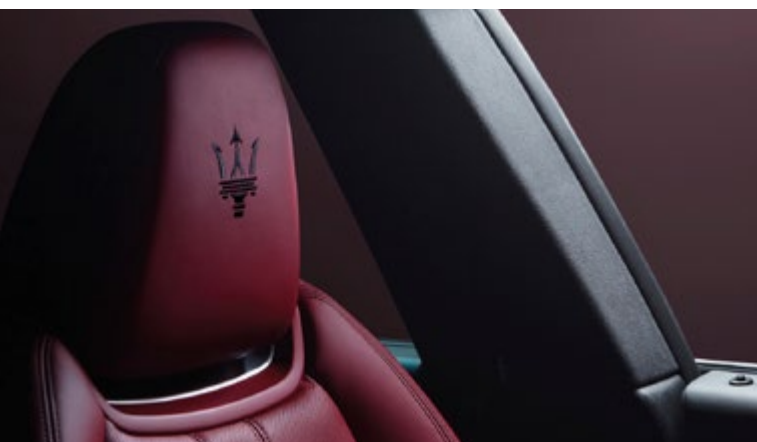
**730**<sub>Nm</sub>

# Levante-The Maserati of SUVs

In true Maserati grand touring tradition, the **Levante** offers everything you would expect of a Maserati – from snarling responsiveness to effortless long-distance refinement. At the same time, its dramatic SUV proportions are balanced with graceful lines and muscular forms that convey its dynamic purpose. From the chassis with a very low center of gravity as you glide through your top speeds, to the perfectly balanced weight distribution, through its sharp aerodynamic body. The **ultimate combination of leading on-road performance and off-road capabilities.**



Levante - Side air vents and Modena Badge



Levante - Headrest detail



Levante - Grille



430<sup>HP</sup>  
Max power

264<sup>km/h</sup>  
Max speed

5.2<sup>sec</sup>  
Acceleration

V6  
Engine layout

AWD  
Traction

580<sup>Nm</sup>  
Max torque

Modena S version technical specifications.



# Levante **GT Hybrid**-Performance charged

Find out more about [Levante GT Hybrid](#)



Levante GT Hybrid - Side air vents and GT Badge



Levante GT Hybrid - Headrest detail



Levante GT Hybrid - Grille

The **Levante GT Hybrid** is the Maserati of SUVs that raises performance and style to new heights, with enhanced efficiency. Inspiring, electrifying, with the **unmistakable Maserati roar**. The hybrid technology in the new Levante is designed to magnify the exhilaration of every adventure you take. Accept no boundaries, pave the way with grand Maserati performance that always takes you further. The Levante GT Hybrid covers 0-100 km/h in 6 seconds, with a top speed of 245 km/h. Mild hybrid technology by name, roaring Maserati power by life. The hybrid system uses 18% less fuel for the same performance of the 350 hp V6 petrol version.



**330**<sub>HP</sub>  
Max power

**245**<sub>km/h</sub>  
Max speed

**6.0**<sub>sec</sub>  
Acceleration

**L4**  
Engine layout

**AWD**  
Traction

**450**<sub>Nm</sub>  
Max torque

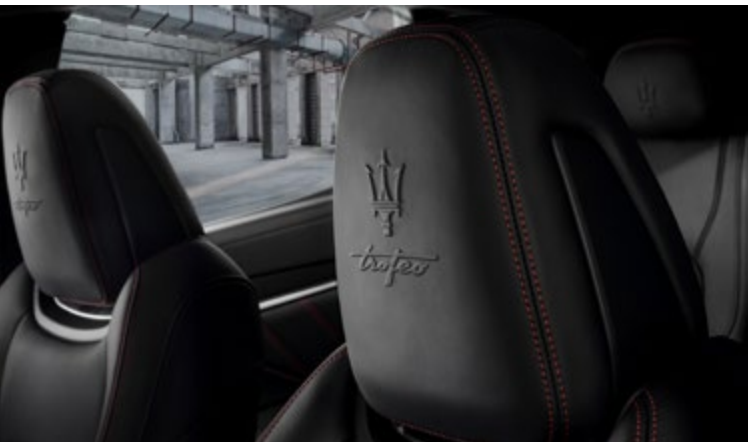
# Levante Trofeo - The Art of Fast

Born from a passion for the racetrack, the **Levante Trofeo is created to maximize your emotions**, no matter the terrain.

Like the wind it takes its name from, the Levante Trofeo is capable of transforming from benign calm to raging storm in an instant. The 580 hp twin-turbo V8 engine makes it thunder from 0-100 km/h in a mere 4.1 seconds with a prodigious top speed of 302 km/h. The Trofeo-specific design elements contribute to constantly remind you that performance is a priority: from the front grille styled in Black Piano to the dark V8 exhaust pipes, from the dash of red on the Trident logo on the C-pillar to the Trofeo badge over the air vents, while the Tricolore on the B-pillar illustrates its audacious Italian soul.



Levante Trofeo - Side air vents and Trofeo Badge



Levante Trofeo - Headrest detail



Levante Trofeo - Grille

**580<sup>HP</sup>**  
Max power

**302<sup>km/h</sup>**  
Max speed

**4.1<sup>sec</sup>**  
Acceleration

**V8**  
Engine layout

**AWD**  
Traction

**730<sup>Nm</sup>**  
Max torque





The interior of the Levante exudes authentic Maserati character. That means **elegant Italian style**, meticulously crafted finishes and a race-bred energy that inspires **long-distance, luxurious travel**. There is also a liberating feeling of all-round space on board. This, along with the commanding SUV driving position, may come as a surprise given the coupe-like exterior.

***A distinctive invitation***







*High-Powered* **Luxury**





**Q4 Intelligence all-wheel Drive System:**

Go the extra mile – whatever the weather. This system is developed to deliver the hallmark Maserati rear wheel drive experience, even when grip is poor. In normal conditions, the Q4 system sends all torque to the rear wheels, for perfectly balanced Maserati driving dynamics and optimal fuel consumption. If traction is lost due to sudden acceleration or low grip on the rear axle, Q4 can alter the torque split from 100 per cent rear-wheel drive to 50-50 between the front and rear wheels in an imperceptible 150 milliseconds. Torque vectoring and a mechanical Limited-Slip Differential at the rear axle, unique for this class of vehicle, also provide essential support when it comes to dynamic driving stability.

**Air Quality sensor:**

The Levante is equipped with an intelligent sensor paired with a signal analysis system that calculates the external pollution levels and prevents polluted air and toxic gases from entering the cabin, improving the comfort of everyone onboard.



**Active Air Suspension:**

The advanced active air suspension raises or lowers the vehicle according to need or preference. With six settings to choose from, the driver can select whatever height is appropriate for the road or terrain, from a high clearance for off-roading to a low setting for fast, efficient and smooth motorway driving.







#### **Power Sunroof:**

The Levante can be fitted with an electric sunroof in tinted safety glass, with a manual sunshade. The sunroof is power controlled, and it can be tilted at the rear or opened completely; in the latter case it retracts into the roof of the car and a front flap rises automatically to deviate the air flow.

#### **MIA (Maserati Intelligent Assistant):**

Powered by Android Automotive OS, the new generation MIA offers an innovative and personalized user experience. The frameless 8"4 HD touch screen with a ratio of 16:10 carries a new graphic interface. The display features an elegant, curved glass edge: a first in automotive design of its kind.

#### **Four-zone climate control:**

To enhance the comfort of the rear seat passengers, four-zone climate control is available: an additional automatic dual-zone air conditioning system installed in the central console allows temperature and air distribution to be adjusted separately through air outlets on the floor and pillars.





**ZF eight-speed automatic transmission:**

The sophisticated ZF eight-speed automatic transmission delivers improved comfort, faster gear shifting, better fuel consumption and increased refinement. Five driving modes are available: Normal, Sport, Off-Road, Increased Control & Efficiency (I.C.E.) and, exclusively for the Levante Trofeo, Corsa Mode.

**Folding rear seats:**

Need to safely store the ski or snowboard bag? The 60/40 split-folding rear seats provide cargo-carrying versatility. When the seat on the smaller side is completely folded down, you will have a continuous nearly-flat extension of the load floor in order to accommodate large-sized equipment and objects.

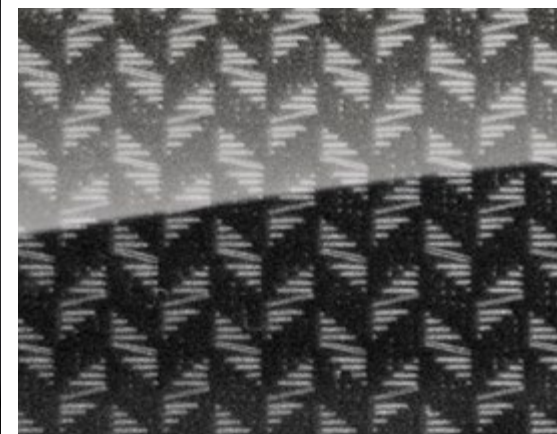




The purposeful ambience of the cabin is another aspect that creates a strong point of difference for Maserati. Two lavish interior trims add to the appeal of this sanctuary for the driver, and further increase the options for personalisation. The first one is the Matt carbon fibre weave, inspired by the Levante Trofeo with its host of exterior carbon fibre features, the 3D effect of the weave pattern adds to the dynamic credentials inside. The second one is the High-gloss metal weave: this stylish new trim is created by using metallic meshes, and is inspired by contemporary architecture; the elegant chevron weave pattern adds to the sporty feel of the cabin.

**Enter the upper atmosphere:**

Take luxury to a higher level in the spacious cabin that exudes Maserati character all around. Signature Italian style combined with meticulously crafted finishes and the finest materials like the PELLETESSUTA upholstery made by Ermenegildo Zegna, a Maserati exclusive that will become part of the Fuoriserie program starting from January 2022.



## Your Maserati *connected to you*

Master the essence of performance, comfort and safety to transform every journey into a unique and thrilling experience. Intuitively and intrinsically linked from the app to the vehicle, Maserati Connect will seamlessly link your car to your habits and needs, leaving you free to enjoy driving at its best.

### Remote Services:

The Maserati Connect App displays fuel level, tyre pressure, odometer, oil-life, and vehicle health report card including checks for Powertrain, Brakes & Suspension, Oil & Fluids, Safety systems and Lights. Every information is updated on the last key off.



Maserati  
CONNECT



### Amazon Alexa:

Alexa can help you play music, get directions, place calls, check the calendar, play audiobooks, control your smart home from the car, and more, with just your voice – so you can keep your hands on the wheel and eyes on the road.

### Home to Vehicle:

You can use Maserati Connect skill for Alexa, as well as the Google Assistant action, to interact from home with the vehicle. The service enables to ask about the vehicle status, and send a destination to the vehicle's navigation system (Send & Go).

# Advanced Driving Assistance System

The Levante is equipped with a comprehensive range of Level 2 Advanced Driving Assistance Systems, the highest level of autonomous driving currently permitted. It means even greater peace of mind in a variety of traffic conditions.



## Traffic Sign Recognition

What if your car could alert you about the speed limit sign you just passed? The Traffic Sign Recognition comes in handy for monitoring different types of sign: speed limits, temporary speed limits and overtaking restriction zones.

## Highway Assist System (HAS)

Ever imagined you could combine the virtues of Adaptive Cruise Control with the Lane Keeping Assist? The Highway Assist System (HAS) is a level 2 autonomous driving system, designed to help you steer, accelerate, brake and keep your vehicle in its lane, especially when you're driving on highways or limited access freeways.

## Lane Keeping Assist (LKA)

Want to make your highway and freeway drive safer? The Lane Keeping Assist (LKA) is a safe driving feature that is designed to identify lane markings and initiate a steering maneuver in order to prevent unintentional lane crossings. A car safety feature that you definitely have to look out for.

## Lane Departure Warning System

Thanks to a camera in the rear-view mirror that monitors road markings ahead, the Lane Departure Warning system helps the driver keep the vehicle in the chosen lane on motorways and main roads. This reduces lane drift and the possibility of lateral collisions by providing a warning when the vehicle crosses lane markings without signalling. Activation of the turn indicator overrides the system.

## Active Blind Spot Assist

Need some help to look over your shoulder electronically? The Active Blind Spot Assist (ABSA) detects vehicles entering your side and rear blind spots when changing lanes, overtaking and parking. It's a driving safety feature that will help you face one of the biggest perils of the road.

## Surround View Camera

This provides a clear 360° view around the car, helping with parking and highlighting otherwise hidden obstructions. Images are captured by two cameras beneath the door mirrors plus front and rear cameras and shown on the main display screen.

## Adaptive Cruise Control with Stop and Go

Need more driving comfort with enhanced security when driving on highways and freeways? The Adaptive Cruise Control (ACC) with Stop and Go adjusts your speed to maintain the preset distance from the vehicle ahead. You will feel safer than ever when driving on highways and freeways in limited or moderate traffic.

## Forward Collision Warning Plus

Want to feel safer when driving in heavy traffic? Whether it's a rush hour, a big event or a traffic jam, the Forward Collision Warning Plus system reduces the risk of rear-end collisions to prevent or limit vehicle damage.

## Rear Cross Path Function

This is a welcome feature that emits a warning when an unseen vehicle is approaching, from the right or left, while reversing out of a parking space.

## Front and Rear Parking Sensor and Reversing Camera

To assist with manoeuvring in tight spaces, the Levante comes equipped with parking sensors in the front and rear bumpers. In addition, there is an optional rear-view camera, fitted close to the boot lock, that shows a view of what is behind the car on the Maserati display.

## Active Driving Assist

Active Driving Assist is an extension of Highway Assist introduced on Maserati range on MY18. This new system is supported on every good road condition, no matter if B-roads urban, extra urban roads or highways.

# Build *Your Own*

Every Maserati is like a **work of art** constructed with the care and attention that only the human hand can provide. Build your own Maserati Levante and **customize it** to fit your needs.



Your Maserati tailor-made to your unique personality. Fuoriserie is the distinctive Maserati personalization program that allows you to create one-of-a-kind Maserati cars, styled by you. Unleash your audacity, set your own rules.

 *Maserati*  
FUORISERIE



# Made to measure *Collections*

Find out more about [Fuoriserie](#)

Two bold Collections, an infinite range of possibilities. Start from a core value that drives you, either performance, contemporary style or innovation, and explore the myriad combinations to find the Maserati that best represents your true spirit.

## **CORSE**

Dedicated to lovers of timeless style, the 'Gentleman Racer' era, and faithful connoisseurs of the Maserati narrative. The Corse Collection is inspired by our glorious racing heritage.



## **FUTURA**

Dedicated to futurists, lovers of technology and new materials, people who embrace and encourage change with enthusiasm and energy. For people who know that the best is yet to come.







Technical *specifications*



#### DIMENSIONS AND WEIGHTS

Length
Width (with side mirrors)
Width (without side mirrors)
Height (*)
Wheelbase
Boot capacity
Fuel tank capacity
Kerb Weight

#### ENGINE

Number of cylinders and layout
Displacement
Bore
Stroke
Compression ratio
Max. power output
Engine speed at max. power output
Peak torque
Engine speed at peak torque

#### TRANSMISSION

Transmission
--------------

#### PERFORMANCE

Maximum speed
Acceleration (0 - 100 km/h)
Stopping distance (100 - 0 km/h)
Fuel consumption (Combined cycle)
Fuel consumption (Low cycle)
Fuel consumption (Medium cycle)
Fuel consumption (High cycle)
Fuel consumption (extra-High cycle)
CO <sub>2</sub> emissions (Combined cycle)
CO <sub>2</sub> emissions (Low cycle)
CO <sub>2</sub> emissions (Medium cycle)
CO <sub>2</sub> emissions (High cycle)
CO <sub>2</sub> emissions (extra - High cycle)
Regulation

#### LEVANTE GT HYBRID

5005 mm
2158 mm
1981 mm
1693 mm
3004 mm
580 l
80 l
2090 kg

L4
1995 cc
84 mm
90 mm
9.5:1
243 kW (330 CV)
5750 rpm
450 Nm
2250 - 4000 rpm

Automatic 8 gears
-------------------

245 km/h
6.0 s
36 m
9.7 - 10.7 l/100 km
13.3 - 14.7 l/100 km
9.7 - 10.5 l/100 km
8.3 - 9.2 l/100 km
9.6 - 10.8 l/100 km
220 - 243 g/km
301 - 333 g/km
219 - 237 g/km
189 - 209 g/km
217 - 244 g/km
Euro 6D Final

#### LEVANTE MODENA

5005 mm
2158 mm
1981 mm
1693 mm
3004 mm
580 l
80 l
2109 kg

V6 60°
2979 cc
86.5 mm
84.5 mm
9.7:1
257 kW (350 CV)
5750 rpm
500 Nm
1750 - 4750 rpm

Automatic 8 gears
-------------------

251 km/h
6.0 s
36 m
12.6 - 13.5 l/100 km
19.2 - 20.6 l/100 km
12.9 - 13.9 l/100 km
10.8 - 11.5 l/100 km
11.6 - 12.3 l/100 km
284 - 304 g/km
433 - 466 g/km
291 - 313 g/km
243 - 260 g/km
261 - 278 g/km
Euro 6D Final

#### LEVANTE MODENA S

5005 mm
2158 mm
1981 mm
1693 mm
3004 mm
580 l
80 l
2109 kg

V6 60°
2979 cc
86.5 mm
84.5 mm
9.7:1
316 kW (430 CV)
5750 rpm
580 Nm
2000 - 4750 rpm

Automatic 8 gears
-------------------

264 km/h
5.2 s
34.5 m
12.1 - 12.8 l/100 km
19.3 - 19.6 l/100 km
12.1 - 13 l/100 km
10.2 - 10.9 l/100 km
10.9 - 11.6 l/100 km
272 - 288 g/km
437 - 443 g/km
274 - 293 g/km
231 - 247 g/km
246 - 263 g/km
Euro 6D Final

#### LEVANTE TROFEO

5020 mm
2158 mm
1981 mm
1698 mm
3004 mm
580 l
80 l
2170 kg

V8 90°
3799 cc
86.5 mm
80.8 mm
9.44:1
427 kW (580 CV)
6750 rpm
730 Nm
2500 - 5000 rpm

Automatic 8 gears
-------------------

302 km/h
4.1 s
34.5 m
14 - 14.6 l/100 km
21.7 - 22.2 l/100 km
14.5 - 15 l/100 km
12 - 12.6 l/100 km
12.6 - 13.2 l/100 km
317 - 330 g/km
492 - 503 g/km
327 - 339 g/km
272 - 285 g/km
286 - 299 g/km
Euro 6D Final

\*Ride Height Normal



MM

*Maserati*

*A world* of possibilities

### **Master Maserati Driving Courses**

There cannot be a Maserati driver in the world who hasn't wondered what it must be like to push the rev counter into the red right up through the gears, to take the racing line through a corner and to test their car's braking capabilities to the limit. The Master Maserati Driving Experience answers all these questions and more through a series of professionally- led courses for those with a desire to discover the performance potential of the fastest Maserati models in their natural environment: the racetrack. With the introduction of the sensational MC20 supercar and the powerful Trofeo versions of Ghibli and Levante, the Master Maserati Driving Experience becomes even more dynamic and thrilling. For full details on our driving experiences, you can visit our website [mastermaserati.com](http://mastermaserati.com) or contact us directly at [info@mastermaserati.it](mailto:info@mastermaserati.it).

### **Financial Services**

Purchasing your car with the aid of a Maserati financial package enables you to choose the best conditions on the market and tailor them to your needs. Official Maserati dealers will be delighted to act as your financial advisers, providing professional guidance on the various payment options available and creating a package tailored to your requirements.

### **Road Assistance Program**

The Maserati Assistance Program offers an exclusive range of services and benefits free of charge for the period of the warranty of the vehicle. The Assistance Centres, available 24 hours a day, can be contacted in emergency situations. At these efficient sites, courteous and highly-skilled professionals will provide the best possible solution to any problem flagged up by the customer.

### **Full Credit Services\***

Stay on the road while your car is being repaired – with our Full Credit Services, you will be behind the wheel of a courtesy car with Geo maps, snow chains and child seats included and free of charge so you can focus on enjoying the drive.

\*For more information, please contact your dealer or Maserati Customer Service at [info@maserati.com](mailto:info@maserati.com).





## The World of the *Trident*

### **Factory Tour**

Discover the heart of the all new MC20's production at the historical Maserati Plant in Modena. The 1h45min Factory Tour begins with a walkthrough of the Brand's heritage and model range presentation. Assembly line, Engine Lab, painting facilities and the official Store follow. Showroom Tour: a 40-minute Showroom tour comprehensive of heritage and model range presentation is available. For more information: [factorytour@maserati.com](mailto:factorytour@maserati.com).

### **Factory Delivery**

After a welcome coffee and drinks in the Showroom, you can visit the historical Maserati Plant, accompanied by a specialist guide and a photographer. Now, it's time for your new Maserati unveiling! Before we bid you farewell, the final pictures are taken. The commemorative digital photo-album is forwarded to the customer. All models can be delivered at Modena Plant. Request the factory delivery to your official Maserati dealer.

### **Maserati Collection**

The Maserati Collection of exclusive leisurewear and branded merchandise has been specially created for those with a passion for all things Maserati. Maserati Collection items are available from all Maserati dealers and the Maserati Store at the Modena showroom in Modena. Alternatively, they can be purchased online at [maseratistore.com](http://maseratistore.com) and delivered directly to your home.

### **Maserati Club**

There are currently more than 30 Maserati Clubs in the world, counting more than 3.000 members. Joining the exclusive Maserati Club means sharing insights, experiences and all the

excitement with other Maserati owners – and being invited to take part in special motoring events. Drivers of cars from every era can enjoy the pleasure of driving their Maserati models in a calendar of national & international events created especially by the Maserati Clubs for their Club members, such as the Global Gathering or the Maserati International Rally. Visit the dedicated section in [maserati.com](http://maserati.com) to get the contacts of your local Maserati Club.

### **Maserati Genuine Accessories**

Specially conceived to satisfy our customers' needs, the Maserati Genuine Accessories are a perfect combination of design, functionality, comfort and performance. Built to the highest standards of Maserati craftsmanship, the Levante accessories range has been developed to guarantee great practicality together with the chance to add your personal and unique touch. Get ready to discover all your customization options in the dedicated brochure, on the official website [maserati.com](http://maserati.com), or through the Official Maserati Network.

### **Customer Programs**

Driving a Maserati is an experience of a lifetime, regardless if you are handling a weekday commute or embarking on a memorable journey. This is why Maserati has created dedicated Customer Programs to assure you miles after miles the utmost care and excellent performance of your Levante. Give yourself extra peace of mind with our programs. Discover more on the official website [maserati.com](http://maserati.com), or through the Official Maserati Network.

### **Archivio Storico**

Created for enthusiasts and owners of vintage Maserati cars, 'Archivio Storico' is an organisation dedicated to those who wish to engage with the marque's glorious past. 'Archivio Storico' can provide Maserati Customers a service of Historical Documentation pertaining to their vehicles. Specifically there are various types of certified historical documents available, carefully and precisely researched within the Maserati Historical Archive. For more information about the Historical Documentation service, email [archivio.storico@maserati.com](mailto:archivio.storico@maserati.com).

### **Maserati Classiche**

At the beginning of a new era, Maserati pays tribute to its past by creating a new programme around its most precious resource: Our History. Maserati Classiche it's a new department specifically designed for Maserati's Classic cars owners. Maserati Classiche provides for our customers several dedicated services concerning the Certification of Authenticity, components for Classic cars and the support for restoration. For additional information related to Maserati Classiche Programme, please contact Us by email [maserati.classiche@maserati.com](mailto:maserati.classiche@maserati.com).

## Worldwide Contacts

### **Europe:**

Mail: [info@maserati.com](mailto:info@maserati.com)  
Phone: 00 800 62737284 (toll free)  
+390244412899

### **Americas:**

Mail: [mymaserati@maserati.com](mailto:mymaserati@maserati.com)  
Phone: 877-696-2737 (toll free)

### **Middle East:**

Mail: [Customercare\\_mea@maserati.com](mailto:Customercare_mea@maserati.com)

### **China:**

Phone: 400-688-51-11 (toll free)  
021-61210200

### **Japan:**

Mail: [info.japan@maserati.com](mailto:info.japan@maserati.com)  
Phone: 0120-965-120 (toll free)





The illustrations and texts contained in this catalogue are based on the information available at the time of production. Some models, features and accessories may not be available or may only become available after the car's launch on the market or within the Fuoriserie programme. Maserati reserves the right to modify colours, designs and technical features at any time and without prior notice. Official Maserati Dealers will be glad to provide further details and updates in this regard. Stay in touch with Maserati by visiting [maserati.com](https://www.maserati.com)



